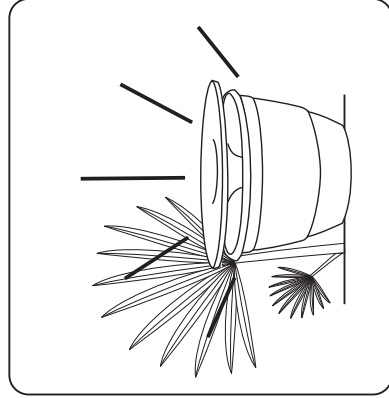
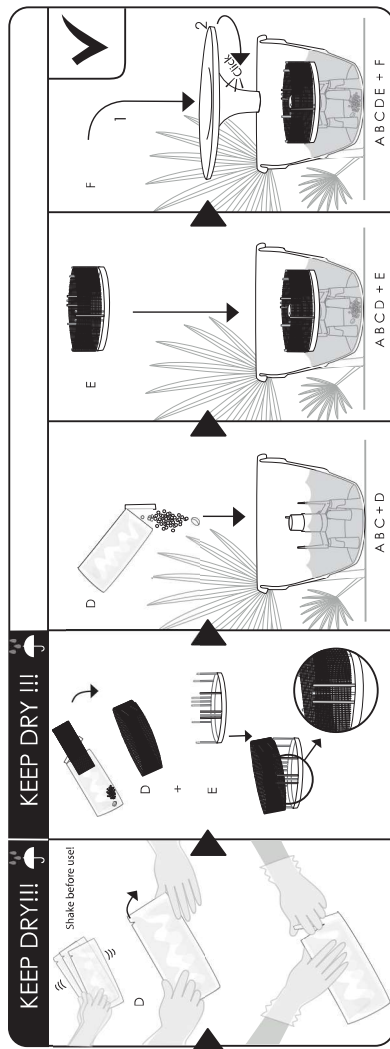
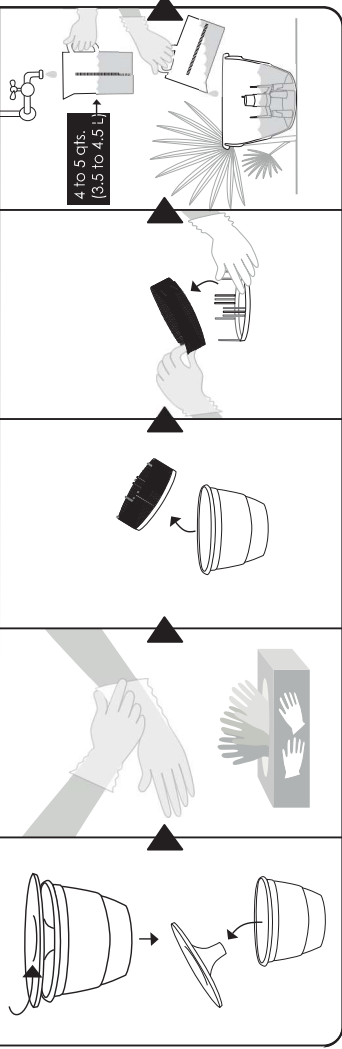


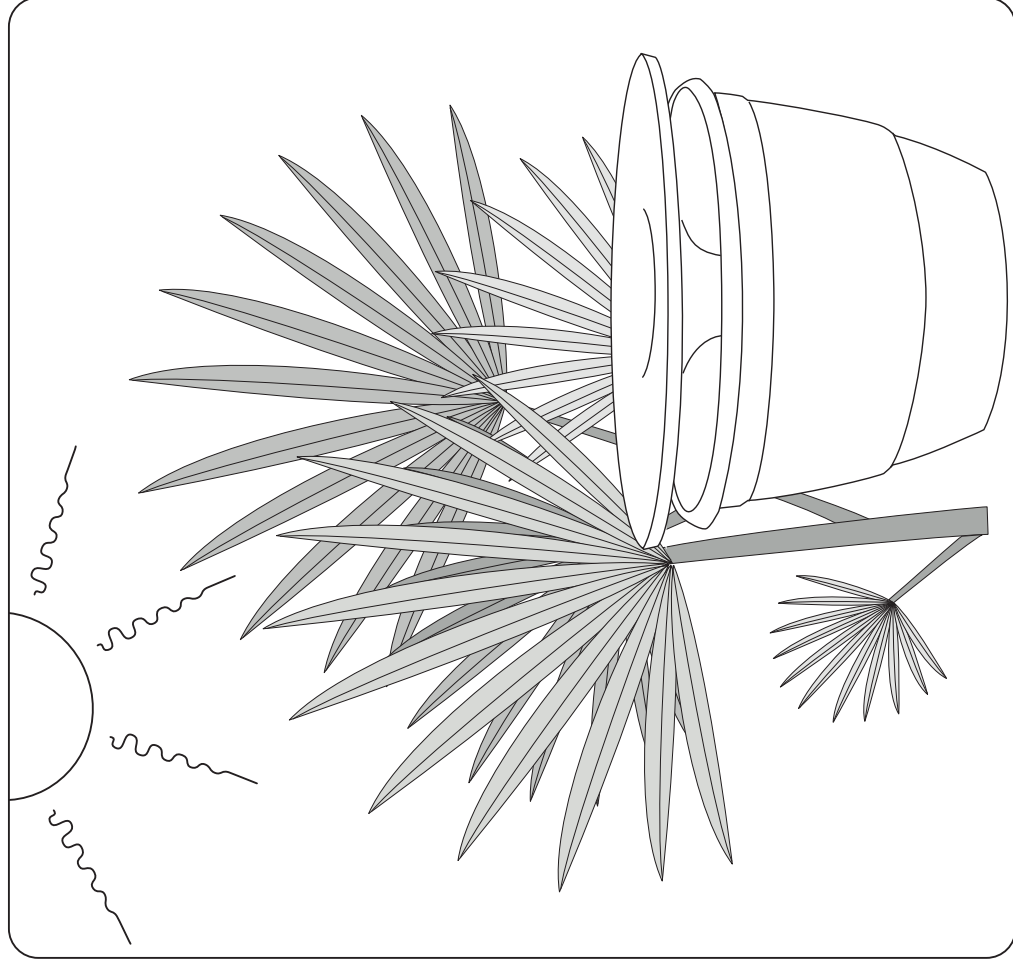
## 6 Maintenance



**Manufactured by:**  
 In2Care BV  
 Marijkeweg 22, 6709 PG,  
 Wageningen,  
 The Netherlands

EPA Reg. No. 91720-XX  
 EPA Est. No. XXXXX-XX-XXX

# In<sup>2</sup>Care<sup>®</sup> In<sup>2</sup>Mix<sup>®</sup> User Manual

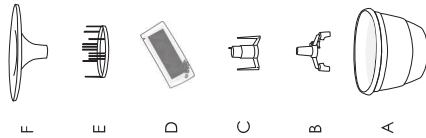




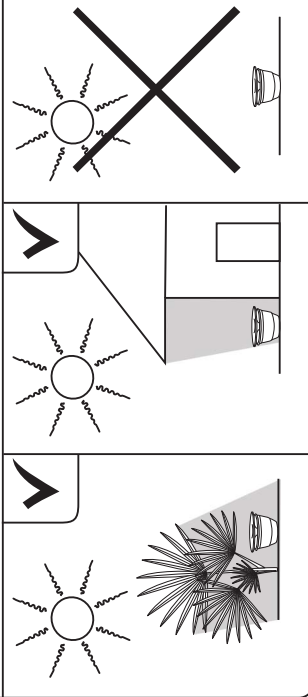
# In2Mix® User Manual

- 1.....Parts
- 2-4.....Placement
- 5.....Assembly
- 6.....Maintenance

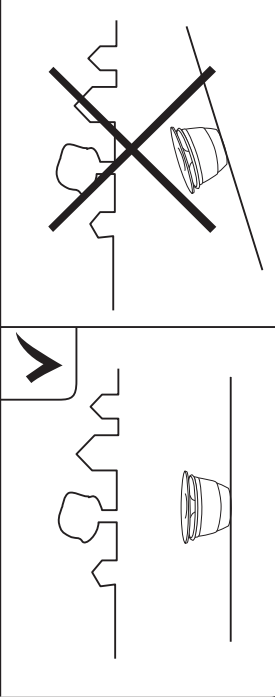
## 1 Parts



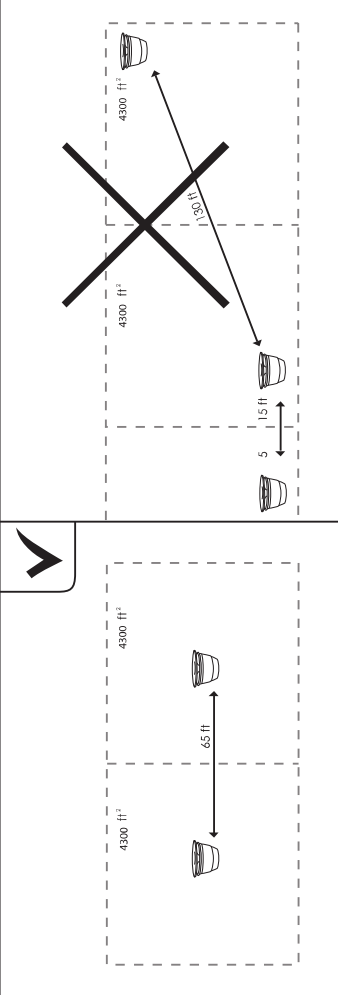
## 2 Placement



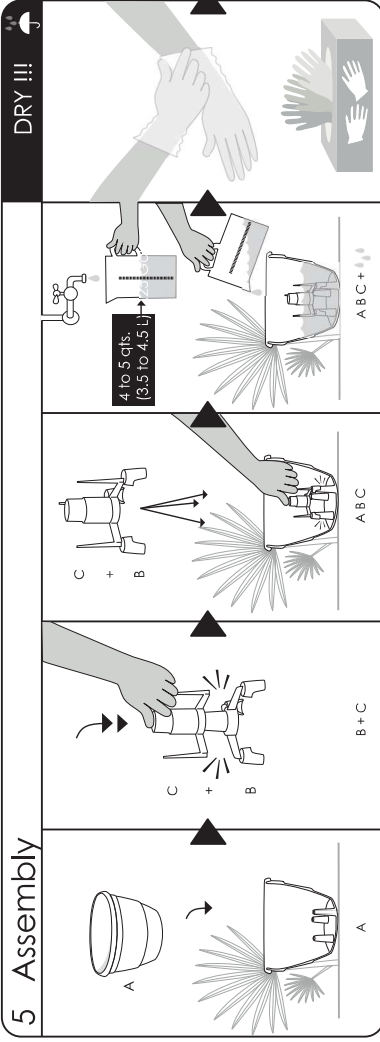
## 3 Placement



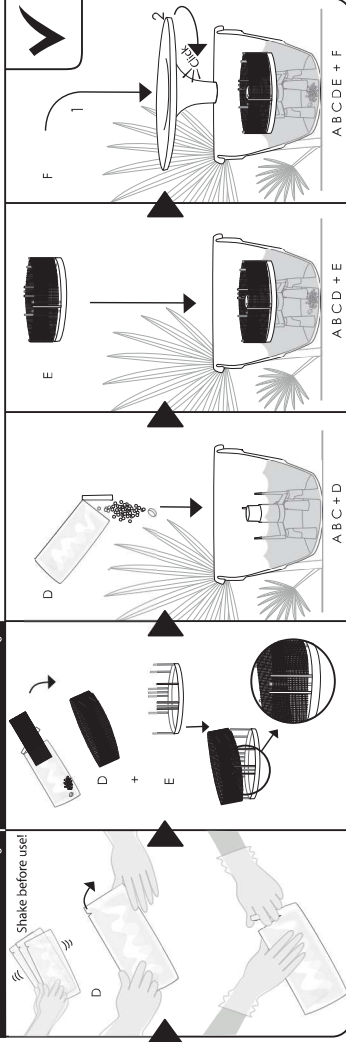
## 4 In2Care Mosquito Trap Placement



## 5 Assembly



## KEEP DRY !!!



### Trap Placement

Place the activated IN2CARE® trap outside on the ground in a level, shaded location. Avoid locations with continuous direct sunlight. For optimal coverage, place at least 1 trap every 4,300 sq. feet (400 sq. meter), or at least 10 traps per acre. Do not exceed 15 traps per acre.

### Trap Assembly

Place the bottom pot of the trap (A) on the ground, insert the interface (B) snugly into the central tube (C) by clicking the two pieces together and pressing them tightly onto the pins of the bottom pot. Fill the pot with 4 to 5 quarts (3.5 to 4.5 liters) of clean tap water. To ensure that the parts are inserted correctly, lift the water-filled pot up to see if there is any water leaking from the pot. If pot leakage is observed, press the interface and central tube on more lightly. Shake and open a refill packet (D) by tearing it down at the notches. Gently take out the powder-coated netting. Place the netting onto the floater (E) as shown in the picture. Make sure that the netting is fixed above the rim of the floater and try not to touch the netting extensively to avoid removal of the active powder. Empty the contents (powder and odor tablets) of the refill packet into the water of the trap. Put the floater inside the trap by gently placing it over the central tube onto the water. As a last step, place the lid (F), onto the trap by clicking it onto the central tube (C) firmly via a twisting movement. Use one IN2MIX® packet per trap every 4 weeks when adult mosquitoes are active.

### Trap Maintenance

Re-visit each IN2CARE® trap every 4 weeks. Remove the lid and take out the floater. Dispose of the waste materials (netting and water) as indicated in the Storage and Disposal section of this label. Refill with 4 to 5 quarts (3.5 - 4.5 liters) of clean tap water. Take a new IN2MIX® refill packet and repeat assembly steps as described above.

### How it Works

IN2MIX® slowly kills adult *Aedes* spp. mosquitoes; therefore, dead adult mosquitoes may not be found in the trap. The *Aedes* spp. larvae that emerge from eggs laid inside the trap are killed by the growth regulator prior to transforming into adults. This means that it is normal to see small living larvae in the trap that will eventually die. After laying eggs, the adult female should be contaminated with a growth regulator and slow acting adulticide so she can carry the growth regulator to other nearby breeding sites and should die within a few days following exposure to the adulticide.

**Note:** For best results, remove/empty artificial water containers (e.g., flower pots, plastic cups, car tires, etc.) that serve as other breeding sites, and use a registered mosquito larvicide to treat breeding sites that cannot be removed or emptied. We recommend outdoor trap placement in shaded areas, close to human habitation/houses. In dry areas, keep checking the water level inside the trap regularly and add more water when needed. When traps are disturbed by animals, stability can be improved by fixating the trap into the soil using pins that can be added to the interface. Another option is to drill a small hole in the rim of the pot (A) and tie the trap to a pole or tree using a tie wrap or small rope.