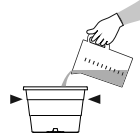


## HOW TO ASSEMBLE



### STEP 1:

1. Fill the base of the trap with 5 quarts (4.7 liters) of clean tap water



2. **SHAKE THE In2Mix® PACKAGE THOROUGHLY.** Open by tearing at the notches and gently take out the powdercoated gauze strip.

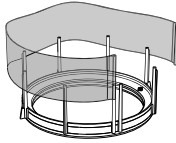


3. Empty the remaining contents (powder and odor tablets) of the In2Mix® package into the water in the base of the trap. Do not allow the gauze to get wet.

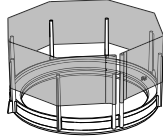


### STEP 2:

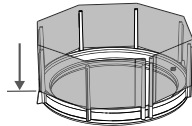
1. To attach the In2Mix® gauze strip to the floater, slide the loop at the end of the gauze over the pin as shown. Try not to touch the gauze extensively to avoid removal of the active powders.



2. Wrap the gauze around the floater and slide the other gauze loop on the last pin as shown. Work your way around moving the gauze down at each pin.



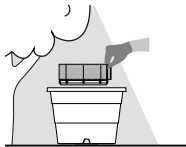
3. Push the gauze down the pins until it will go no further (where the bottom of the pin hits the circular rib). The rib will prevent the gauze from sliding down too far.



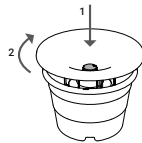
### STEP 3:

1. Place the assembled floater inside the base of the trap by gently placing it over the central tube flat onto the water.

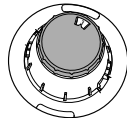
*Do not allow the gauze to get wet as water will degrade the powder.*



2. Place the lid on the central tube, push it down and turn it clockwise.

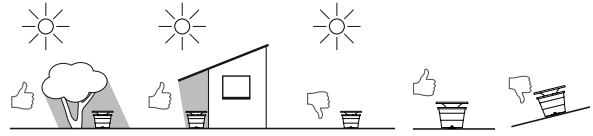


3. Turn the time indicator to the number of the current month as a service reminder. Use one In2Mix® package per trap every 4 weeks when adult mosquitoes are active.



## WHERE TO PLACE

1. Place the water-filled In2Care® trap outside on the ground in a level, shaded location near human habitation. Avoid locations with direct sunlight; continuous shade is needed.



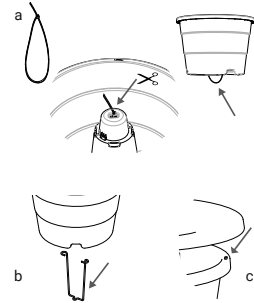
For best results, remove and/or empty artificial water containers (e.g., flower pots, plastic cups, car tires, etc.) and natural breeding sites (e.g., puddles, tree holes, etc.). Larger water bodies that cannot be removed or emptied should be (frequently) treated with appropriate larvicides.

2. For optimal coverage, place at least 1 In2Care® trap every 4,300 sq. feet (400 sq. meters), or at least 10 traps per acre in areas where Aedes mosquitoes breeding can be expected. Do not exceed 15 traps per acre.



3. When necessary, stability can be improved by securing the trap to the ground with the following:

- a. Wire bracket, available separately from the distributor, which snaps onto the base. The wire bracket can be screwed onto a surface or fixed with a ground pin.
- b. Zip tie (not included). Zip Tie spec: width: 4.8mm length: 600mm. The loop can be tied to a pin or hook.
- c. The base may also be attached to a pole, shrub or tree by using zip ties or a small rope tied through the holes in the rim of the base.



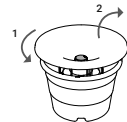
**NOTE:** Aedes spp. mosquitoes can have very specific breeding preferences within certain locations.

Check for the presence of live and dead mosquito larvae inside the traps every 4 weeks. When a trap continuously has zero or much fewer larvae when compared to other nearby traps, the unattractive trap should be relocated to another nearby shaded location.

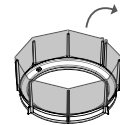
## MAINTAINING THE TRAP

1. Re-visit each In2Care® trap every 4 weeks. Remove the lid by turning it counterclockwise until it stops and lift up.

**NOTE:** In hot and dry climates the water level must be checked more frequently. Add water as necessary to maintain the correct amount (5 quarts; 4.7 liters) in the base of the trap.



2. Take out the floater and dispose of the used gauze and water as indicated in the STORAGE AND DISPOSAL section of this label.



3. Remove leaves or other debris that may have fallen into the base of the trap. Refill the trap with 5 quarts (4.7 liters) of clean tap water.



4. Take a new In2Mix® package and repeat Steps 1 & 2 in HOW TO ASSEMBLE.

